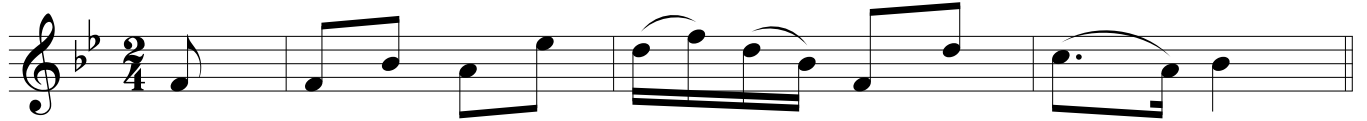


Phrases

The smallest musical unit that conveys a "complete" musical "thought"

1. Schubert. "Das Wandern" (to wonder)



2. Popular Song



3. Popular Song



4. Beethoven Sonata op.2 n.1



Periods

Are composed of two or more phrases

I. Repetition

Franz Schubert. Die Schöne Müllerin. No.1 "Das Wandern" (to wander)

A musical staff in G minor, 2/4 time. The first phrase is enclosed in a dashed box and labeled "phrase". A solid bracket underneath the entire staff is labeled "period". The melody consists of eighth and quarter notes with some slurs.

Popular Song

A musical staff in G major, 2/4 time. The first phrase is enclosed in a dashed box. It is followed by a first ending (labeled "1.") and a second ending (labeled "2."). The first ending leads back to the beginning of the phrase, while the second ending concludes the phrase.

II. Continuous Elaboration

Die Schöne Müllerin. No.6

Two musical staves in D major, 3/4 time. The first staff shows a phrase enclosed in a dashed box. The second staff continues the melody with various ornaments, slurs, and a triplet of eighth notes, illustrating continuous elaboration of the original phrase.

Sergei Prokofiev Piano Sonata No.9, 3rd mvt.

Two musical staves in B-flat major, 4/4 time. The first staff shows a phrase enclosed in a dashed box. The second staff continues the melody with various ornaments, slurs, and a triplet of eighth notes, illustrating continuous elaboration of the original phrase.

Chopin's Mazurka No.1 Op.6, an example of graphic analysis

